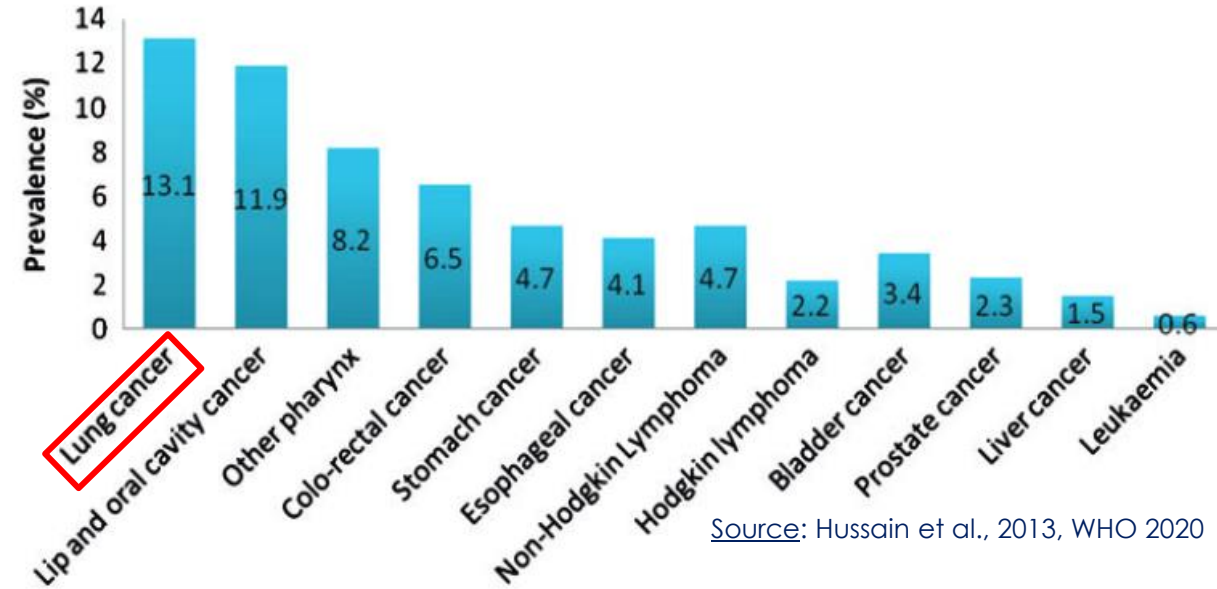
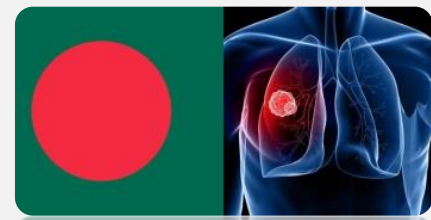


Motivation: **LUNG CANCER** (Bangladesh-case study)



Source: Hussain et al., 2013, WHO 2020

Research goal:

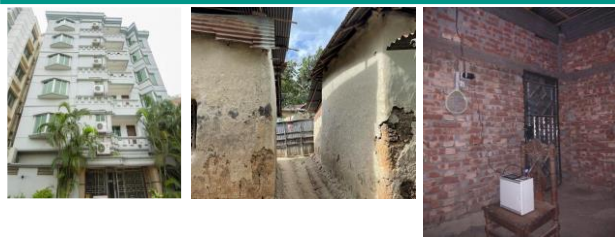
Environmental dynamics/
exposure & countermeasures

2nd cause: Lung
Cancer (**worldwide**)

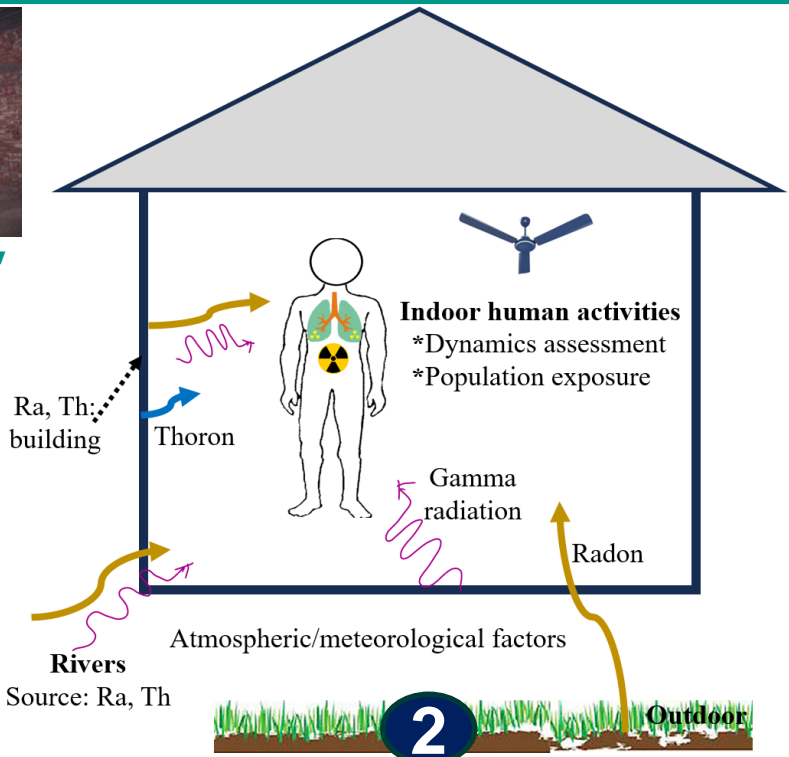
Risk factors →



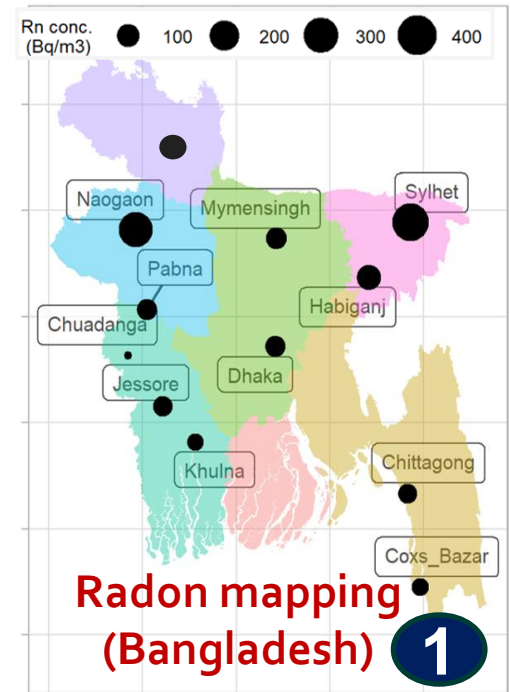
Environmental Survey: Radiation (Radon)



'300 Bangladeshi dwellings'
(In-situ measurements)



2
Dwelling based factor analysis



World average (Bq/m³) : 39
India: 57 Japan of 13.7- 20.8
(UNSCEAR, 2006), (Omori et al., 2020)

(1) + (2) → Estimation: Lung Cancer Risks/ Countermeasures